

**Survey for Parents and Guardians  
2018-2019**

This survey is an opportunity for you to help this school by sharing your opinions about it. Your opinions are important, and the school is interested in hearing them.

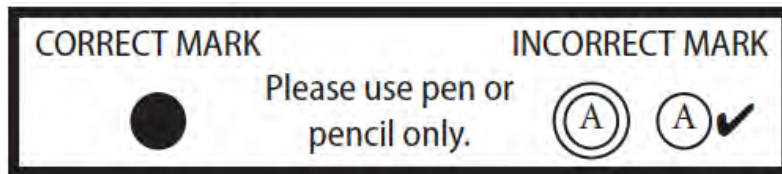
If you have more than one child at this **school**, please think about the oldest of these children as you answer these questions.

Answer all the questions based on your experiences at **this** school only. Remember, we appreciate your honest opinions.

**Do not write your name on this survey.** No one can tell who filled out this survey. Your answers will be completely private and unknown to others.

Please begin by writing the name of the school your child attends on the line below:

School Name: \_\_\_\_\_



**Begin by answering the following questions about yourself and your child.**

1. I am a...

- (A) Parent of at least one child at this school
- (B) Grandparent, other relative, and/or legal guardian of a child at this school
- (C) Not applicable, not sure, or decline to answer

2. Is your child in any of these programs? (**Mark all that apply.**)

- (A) Migrant Education Program
- (B) Special Education Program or has had an Individual Education Plan (IEP)
- (C) English Language Development (for children learning English)
- (D) Gifted and Talented Education (GATE) or takes Honors/Advanced Placement classes
- (E) Not applicable, not sure, or decline to answer

3. How many years has your child been at this school?

- (A) Less than one year
- (B) 1 to 2 years
- (C) 3 to 5 years
- (D) 6 to 10 years
- (E) Over 10 years
- (F) Not applicable, not sure, or decline to answer

4. What is your race or ethnicity?

- (A) American Indian or Alaska Native
- (B) Asian or Asian American
- (C) Black or African American (Not Hispanic)
- (D) Filipino
- (E) Hispanic or Latino
- (F) Native Hawaiian or Pacific Islander
- (G) White (Not Hispanic)
- (H) Two or more races/ethnicities
- (I) Not applicable, not sure, or decline to answer

5. Does one or more of your children receive a free or reduced-price breakfast or lunch at this school?

- (A) No
- (B) Yes
- (C) Not applicable, not sure, or decline to answer

6. How are you related to your child?

- (A) Biological parent
- (B) Adoptive parent
- (C) Stepparent
- (D) Foster parent
- (E) Grandparent
- (F) Other guardian

7. In what grade is your child?

- |   |   |  |
|---|---|--|
| <input type="radio"/> (A) Kindergarten          | <input type="radio"/> (F) 5 <sup>th</sup> grade | <input type="radio"/> (K) 10 <sup>th</sup> grade |
| <input type="radio"/> (B) 1 <sup>st</sup> grade | <input type="radio"/> (G) 6 <sup>th</sup> grade | <input type="radio"/> (L) 11 <sup>th</sup> grade |
| <input type="radio"/> (C) 2 <sup>nd</sup> grade | <input type="radio"/> (H) 7 <sup>th</sup> grade | <input type="radio"/> (M) 12 <sup>th</sup> grade |
| <input type="radio"/> (D) 3 <sup>rd</sup> grade | <input type="radio"/> (I) 8 <sup>th</sup> grade | <input type="radio"/> (N) Other                  |
| <input type="radio"/> (E) 4 <sup>th</sup> grade | <input type="radio"/> (J) 9 <sup>th</sup> grade | <input type="radio"/> (O) Ungraded               |

8. Does one or more of your children participate in this school's after school program? (Respond for your child that most frequently participates in the after school program.)

- (A) No
- (B) Yes – 1 day a week
- (C) Yes – 2 days a week
- (D) Yes – 3 days a week
- (E) Yes – 4 days a week
- (F) Yes – 5 days a week

**Please indicate how much you agree or disagree with the following statements about this school.**

<b><i>This school...</i></b>	<b>Strongly <u>Agree</u></b>	<b><u>Agree</u></b>	<b><u>Disagree</u></b>	<b>Strongly <u>Disagree</u></b>	<b><u>Don't Know/NA</u></b>
9. promotes academic success for <b>all</b> students.	(A)	(B)	(C)	(D)	(E)
10. treats all students with respect.	(A)	(B)	(C)	(D)	(E)
11. clearly tells students in advance what will happen if they break school rules.	(A)	(B)	(C)	(D)	(E)
12. encourages all students to enroll in challenging courses regardless of their race, ethnicity, or nationality.	(A)	(B)	(C)	(D)	(E)
13. gives all students opportunities to “make a difference” by helping other people, the school, or the community.	(A)	(B)	(C)	(D)	(E)
14. keeps me well-informed about school activities.	(A)	(B)	(C)	(D)	(E)
15. provides quality counseling or other ways to help students with social or emotional needs.	(A)	(B)	(C)	(D)	(E)
16. is a supportive and inviting place for students to learn.	(A)	(B)	(C)	(D)	(E)
17. allows input and welcomes parents’ contributions.	(A)	(B)	(C)	(D)	(E)
18. provides students with healthy food choices.	(A)	(B)	(C)	(D)	(E)
19. communicates the importance of respecting all cultural beliefs and practices.	(A)	(B)	(C)	(D)	(E)
20. gives my child opportunities to participate in classroom activities.	(A)	(B)	(C)	(D)	(E)
21. provides instructional materials that reflect my child’s culture, ethnicity, and identity.	(A)	(B)	(C)	(D)	(E)
22. enforces school rules equally for my child and all students.	(A)	(B)	(C)	(D)	(E)
23. provides quality activities that meet my child’s interests and talents, such as sports, clubs, and music.	(A)	(B)	(C)	(D)	(E)
24. has quality programs for my child’s talents, gifts, or special needs.	(A)	(B)	(C)	(D)	(E)
25. is a safe place for my child.	(A)	(B)	(C)	(D)	(E)
26. promptly responds to my phone calls, messages, or e-mails.	(A)	(B)	(C)	(D)	(E)
27. encourages me to be an active partner with the school in educating my child.	(A)	(B)	(C)	(D)	(E)

C A L I F O R N I A *school parent* S U R V E Y

Please indicate how much you agree or disagree with the following statements about this school.

<b><i>This school...</i></b>	<u>Strongly Agree</u>	<u>Agree</u>	<u>Disagree</u>	<u>Strongly Disagree</u>	<u>Don't Know/NA</u>
28. actively seeks the input of parents before making important decisions.	(A)	(B)	(C)	(D)	(E)
29. has clean and well-maintained facilities and properties.	(A)	(B)	(C)	(D)	(E)
30. provides high quality instruction to my child.	(A)	(B)	(C)	(D)	(E)
31. motivates students to learn.	(A)	(B)	(C)	(D)	(E)
32. has teachers who go out of their way to help students.	(A)	(B)	(C)	(D)	(E)
33. has adults who really care about students.	(A)	(B)	(C)	(D)	(E)
34. has high expectations for all students.	(A)	(B)	(C)	(D)	(E)
35. encourages students to care about how others feel.	(A)	(B)	(C)	(D)	(E)
36. helps students resolve conflicts with one another.	(A)	(B)	(C)	(D)	(E)

<b>How strongly do you agree or disagree with the following statements about this school?</b>	<u>Strongly Agree</u>	<u>Agree</u>	<u>Disagree</u>	<u>Strongly Disagree</u>	<u>Don't Know/NA</u>
37. Teachers communicate with parents about what students are expected to learn in class.	(A)	(B)	(C)	(D)	(E)
38. Parents feel welcome to participate at this school.	(A)	(B)	(C)	(D)	(E)
39. School staff treat parents with respect.	(A)	(B)	(C)	(D)	(E)
40. School staff take parent concerns seriously.	(A)	(B)	(C)	(D)	(E)
41. School staff are helpful to parents.	(A)	(B)	(C)	(D)	(E)

**Based on your experience, how much of a problem at this school is...**

	<u>Not a Problem</u>	<u>Small Problem</u>	<u>Some-what a Problem</u>	<u>Large Problem</u>	<u>Don't Know/NA</u>
42. student tobacco use (cigarette smoking and/or smokeless tobacco such as dip, chew, or snuff)?	(A)	(B)	(C)	(D)	(E)
43. student use of electronic cigarettes, e-cigarettes, or other vaping device such as e-hookah, hookah pens, or vape pens?	(A)	(B)	(C)	(D)	(E)
44. student alcohol and drug use?	(A)	(B)	(C)	(D)	(E)
45. harassment or bullying of students?	(A)	(B)	(C)	(D)	(E)
46. physical fighting between students?	(A)	(B)	(C)	(D)	(E)
47. racial/ethnic conflict among students?	(A)	(B)	(C)	(D)	(E)
48. students not respecting staff?	(A)	(B)	(C)	(D)	(E)
49. gang-related activity?	(A)	(B)	(C)	(D)	(E)
50. weapons possession?	(A)	(B)	(C)	(D)	(E)
51. vandalism (including graffiti)?	(A)	(B)	(C)	(D)	(E)

**Since the beginning of this school year, has any adult in your child's household done any of the following things at your child's school?**

	<u>No</u>	<u>Yes</u>
52. Attended a school or class event, such as a play, dance, sports event, or science fair.	(A)	(B)
53. Served as a volunteer in this child's classroom or elsewhere in the school.	(A)	(B)
54. Attended a general school meeting, for example, an open house, or a back-to-school night.	(A)	(B)
55. Attended a meeting of the parent-teacher organization or association.	(A)	(B)
56. Gone to a regularly scheduled parent-teacher conference with the child's teacher.	(A)	(B)
57. Participated in fundraising for the school.	(A)	(B)
58. Served on a school committee.	(A)	(B)
59. Met with a guidance counselor in person.	(A)	(B)

C A L I F O R N I A
school parent
S U R V E Y

<b>How well has this child's school been doing the following things during the school year?</b>	<u>Very Well</u>	<u>Just Okay</u>	<u>Not Very Well</u>	<u>Does Not Do It At All</u>	<u>Don't Know/NA</u>
60. Letting you know how your child is doing in school between report cards.	Ⓐ	Ⓑ	Ⓒ	Ⓓ	Ⓔ
61. Providing information about how to help your child with homework.	Ⓐ	Ⓑ	Ⓒ	Ⓓ	Ⓔ
62. Providing information about why your child is placed in particular groups or classes.	Ⓐ	Ⓑ	Ⓒ	Ⓓ	Ⓔ
63. Providing information on your expected role at your child's school.	Ⓐ	Ⓑ	Ⓒ	Ⓓ	Ⓔ
64. Providing information on how to help your child plan for college or vocational school.	Ⓐ	Ⓑ	Ⓒ	Ⓓ	Ⓔ